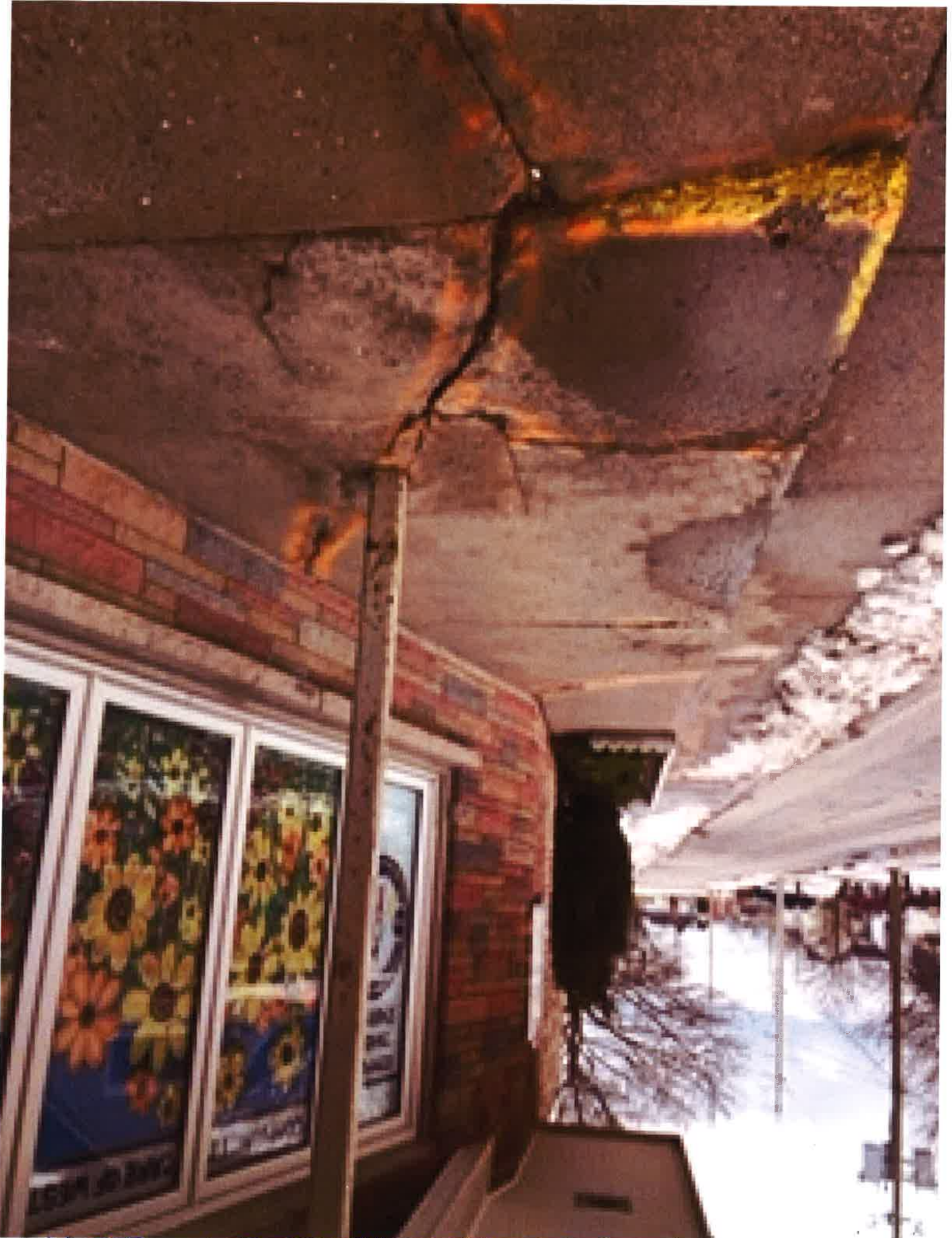
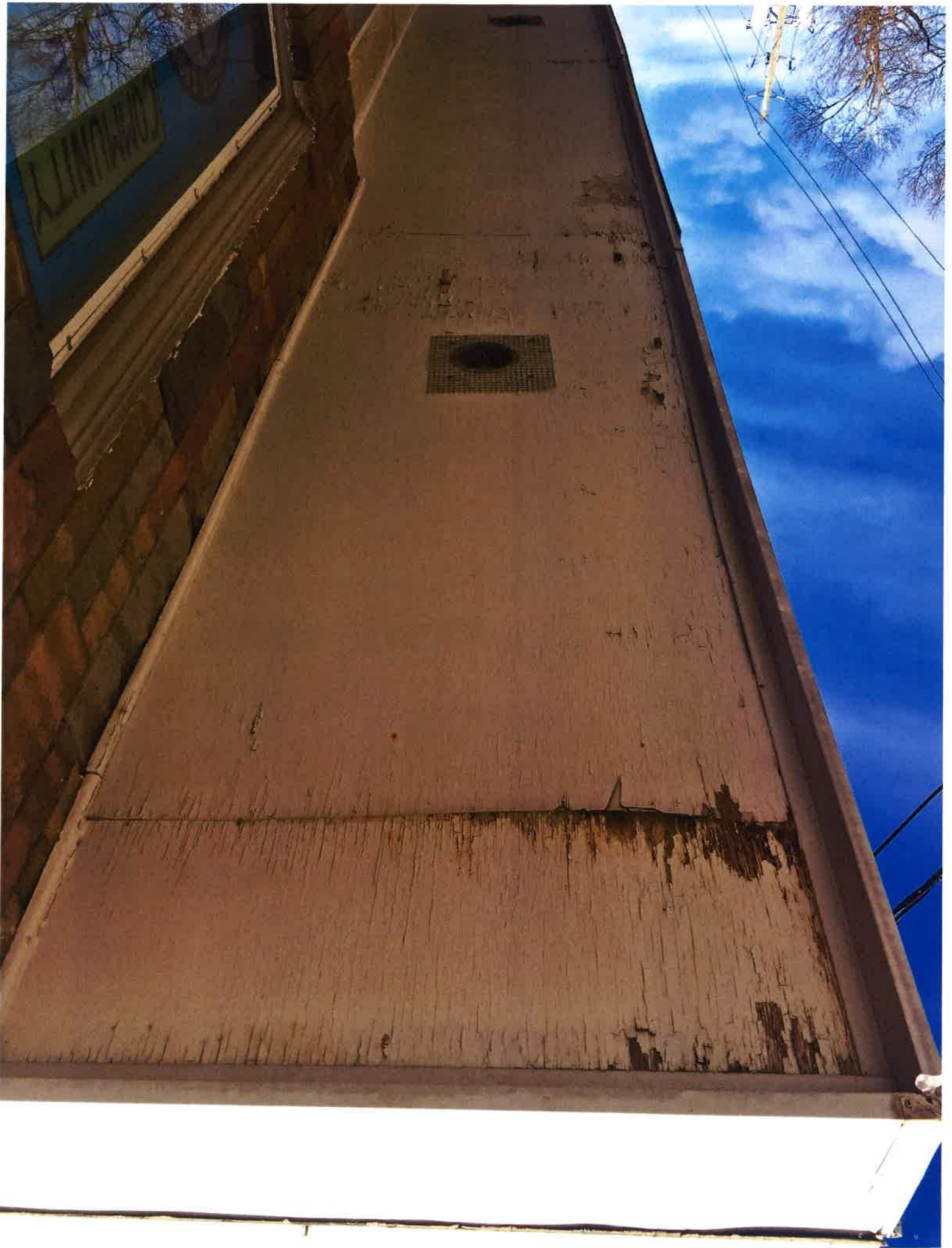




Cagle's Copy



cleans outside from top  
west.

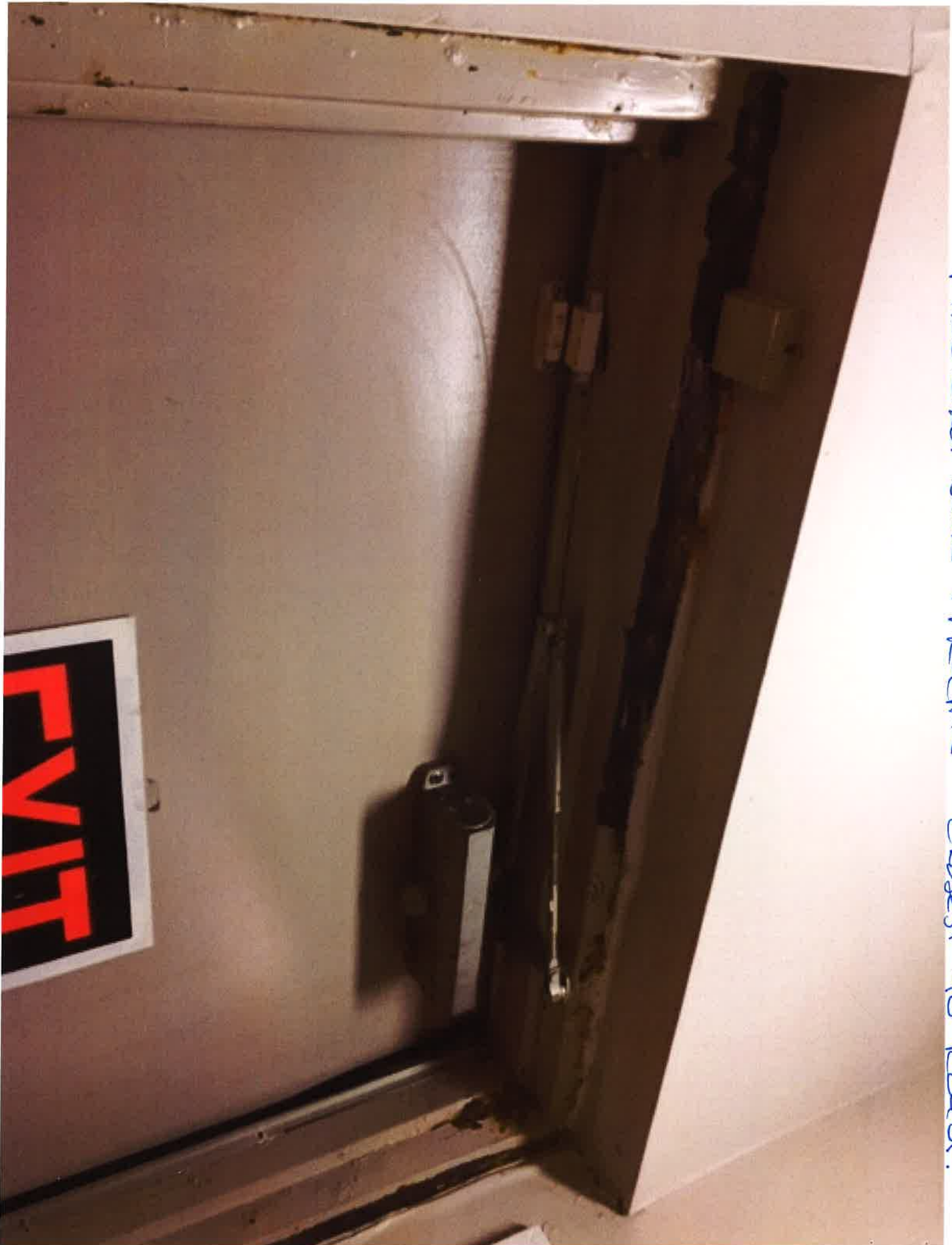




TOP View of Greenhans Sluiceway



Medicine Penetration of facial walls



Fire exit door & frame closest to Road.

Under Sink upstairs to Block Wall



SEEPAGE INTO BACK OFFICE CARPET BY FIRE EXIT





Windows in kitchen





BARRIER- FREE RAMP AT DOOR



CEILING IN STAIRCASE



BROCKEN THERMAL SEAL ON WINDOW



HOLE IN EXTERIOR WALL

*Board Room .*



NO THERMAL INSULATION IN EXT. WALLS



POSSIBLE MOULD ON WINDOW FRAMES



RESULTS OF CONDENSATION ON WINDOWS



EXTERIOR DOOR FRAME AND WALL CONDITION

Moisture | Condensation | Rust.



BASEBOARD TO BE REPLACED



PIPING TO BE ENCLOSED  
INTO WALL SPACE

*- people  
have hit their  
heads.*



CONC. FLOOR TO BE PAINTED

*L Resurfacing  
for no slip*



SPRINKLERS MANIFOLD  
TO BE ENCLOSED



SOUND TRANSFER BETWEEN THE CORRIDOR AND THE OFFICE



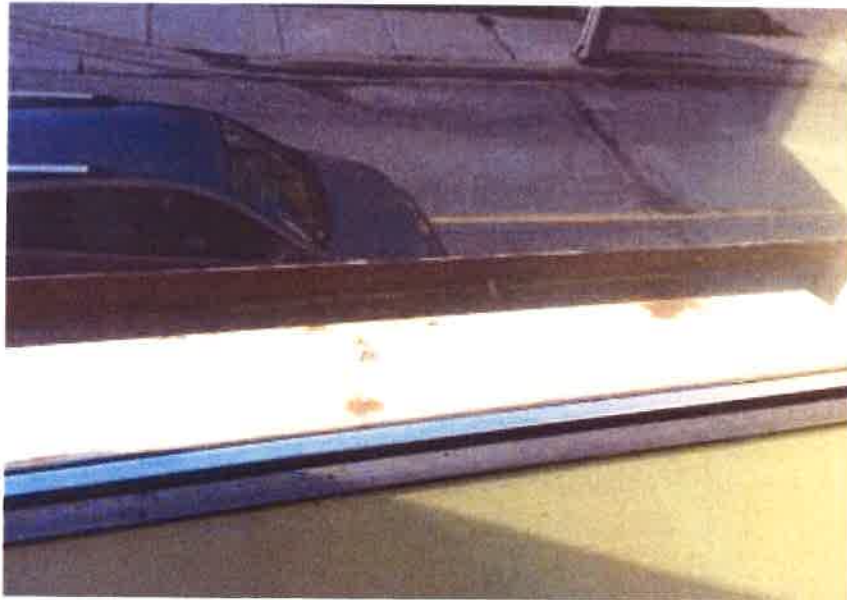
'THERMAL BRIDGE' BETWEEN INTERIOR AND EXTSRIOR  
MAKES INSULATION INEFFECTIVE

Cold  
Damp -  
Difficult  
to Regulate  
Temperature.



Seepage  
FROM  
Overhang  
into E'D'S  
Office Desk  
area.

WATER DAMAGE IN WALL



RUSTED OUT WINDOW FLASHINGS